



# TAU KAPPA EPSILON

— Better Men for a Better World —

## Available Meeting Space

— Book Your Next Meeting Today! —

Treat your employees and guests to a corporate experience by hosting your event at Tau Kappa Epsilon's International Headquarters! With clean, modern spaces and a welcoming staff, Tau Kappa Epsilon offers a large building filled with natural lighting and quiet spaces to host both small and large-scale meetings.

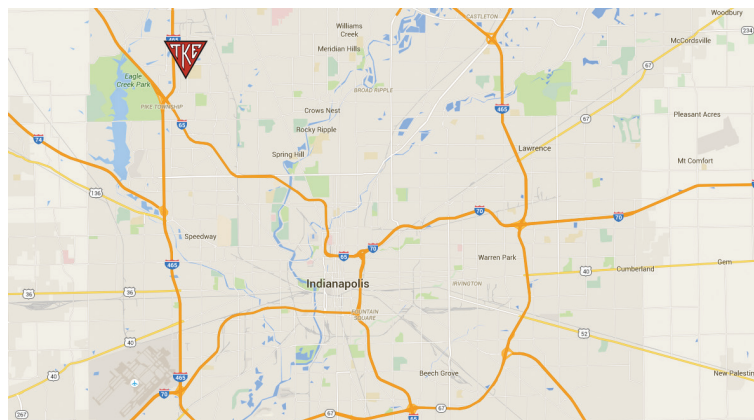
Key features include:

- Easily Accessible Rooms by Stairs and Elevator
- Catering Permitted from Outside Vendors
- Men's and Women's Restroom on Each Floor
- Free Parking
- Smoke-Free Facility

Less than 20 minutes from both the Indianapolis International Airport and downtown city center, our international headquarters is conveniently located for distant and local businesses.

Reservations are available Monday-Friday and between the hours of 8-5 p.m. Holidays excluded.

We look forward to hosting your organization's next event!



**7439 Woodland Dr., Suite 100  
Indianapolis, IN 46278**

To schedule a tour or book a reservation,  
please contact:

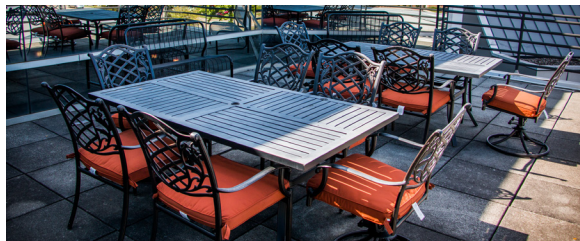
Courtney Frechin  
Office Coordinator  
(317) 872-6533 ext. 244  
[CFrechin@tke.org](mailto:CFrechin@tke.org)  
[www.tke.org/rental](http://www.tke.org/rental)





## Grand Council Meeting Chambers w/ Outdoor Patio

With a modern design and advanced technology system, the Grand Council Meeting Chambers (GCMC) is the perfect area for any meeting or event. The room is customizable to a variety of layouts, and drop-down blackout shades create the perfect lighting situation for on-screen presentations and videos. Floor-to-ceiling windows provide natural lighting and create a positive work environment. From lunches to long-term training sessions, this room is ideal for any business gathering.



Included with the GCMC is access to the full outdoor patio area that overlooks the Fraternity's courtyard. Key highlights include:

- Full A/V with Mac Access, Apple TV, HDMI and VGA
- Overhead Audio Speakers
- Partial Usage of Kitchenette Connected to Room
- Outdoor Patio with Seating
- Blackout Shades



## Ronald Reagan Room

Named and styled in honor of the 40th President of the United States, the Ronald Reagan Room is an ideal meeting area for day-long sessions and training activities. Large windows provide a generous amount of natural lighting, and ample space surrounding the large conference table creates a relaxed atmosphere that is conducive to effective business meetings.

Projector and portable screen available for \$50 per day.



## Educational Center

The Educational Center is located on the bottom floor of the building and is connected to a full kitchen. This room includes a mounted projector and projection screen. The large size of the area makes it the ideal location for activity sessions and long projects.



## Danny Thomas Room

Named and styled after the founder of St. Jude Children's Research Hospital, the Danny Thomas room is best for small group sessions. It is located on the main floor of the building.

Projector and portable screen available for \$50 per day.

Room	Room Dimensions	Classroom Capacity	Theater Capacity	Conference Capacity	U-Shape Capacity	Price Per Day
Grand Council MC	41' x 20'	30	50	20	25	\$300
Ronald Reagan	23' x 18'	-	-	-	10	\$150
Danny Thomas	12' x 17'	-	-	-	6	\$100
Educational Center	32' x 19'	30	70	30	30	\$450

We offer full week and multi-week rental discounts: 1 Week - 10% off; 2 Weeks - 20% off; 3 Weeks - 30% off